

DATA FILE 2009

KAWASAKI HEAVY INDUSTRIES, LTD.

Code No. (7012)

HISTORY

CONTENTS

FINANCIAL HIGHLIGHTS 1
KEY INDICATORS 2
SEGMENT INFORMATION 4
OVERSEAS SALES 5
OPERATIONS BY SEGMENT
 SHIPBUILDING 6
 ROLLING STOCK 8
 AEROSPACE 10

FINANCIAL HIGHLIGHTS

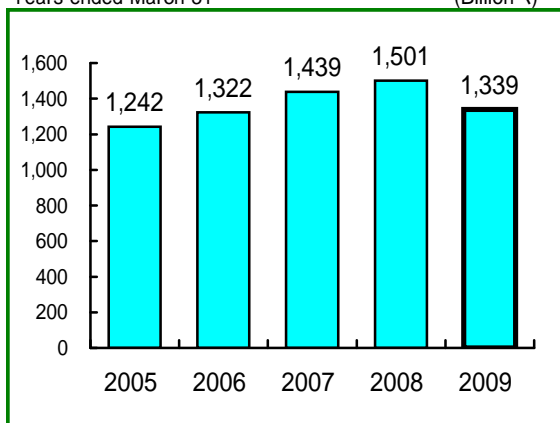
Kawasaki Heavy Industries, Ltd. and consolidated subsidiaries

Years ended March 31

	Millions of yen				
	2005	2006	2007	2008	2009
For the year:					
Net sales	\1,241,592	\1,322,487	\1,438,619	\1,501,097	\1,338,597
Net income	11,479	16,467	29,772	35,141	11,728
Net income per share (yen)	7.9	11.2	18.9	21.1	7.0
Return on average shareholders' equity (%)	5.7%	7.3%	11.1%	11.4%	3.8%
Cash dividends per share (yen)	2.5	3.0	5.0	5.0	3.0
At year end:					
Total assets	1,194,473	1,284,085	1,357,980	1,378,770	1,399,771
Working capital	138,523	113,240	155,412	157,741	165,791
Current ratio (%)	119.8%	114.1%	119.3%	119.1%	120.0%
Total shareholders' equity	201,465	237,588	290,428	313,192	290,441

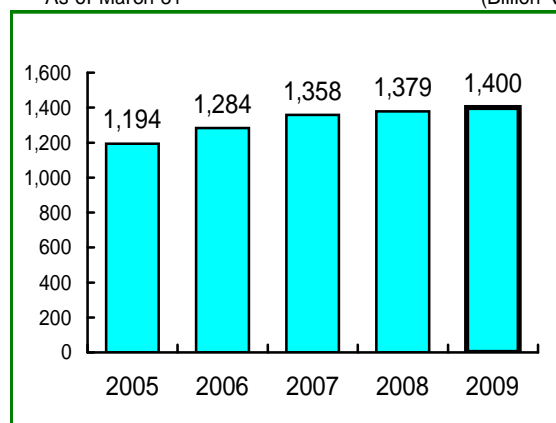
Net Sales

Years ended March 31 (Billion \)



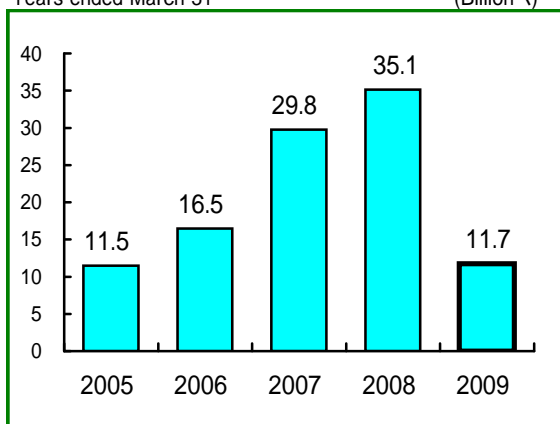
Total Assets

As of March 31 (Billion \)



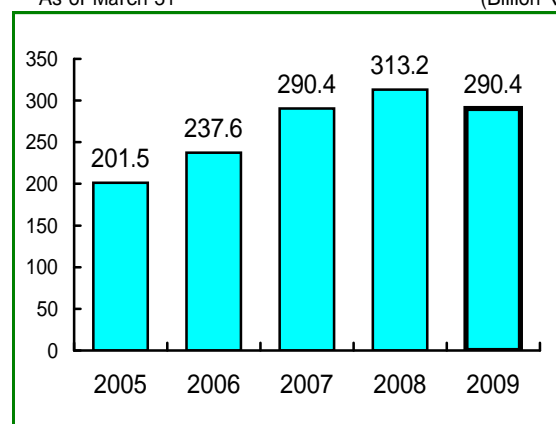
Net Income (Loss)

Years ended March 31 (Billion \)



Total Shareholders' Equity

As of March 31 (Billion \)



KEY INDICATORS (CONSOLIDATED BASIS)

Ratio of Operating Income to Sales
Return on Sales

Earnings per Share
Cash Flow per Share

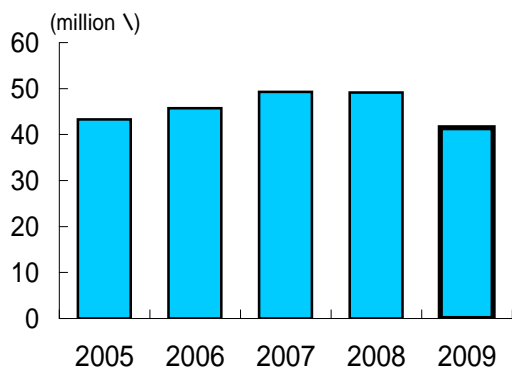
Years ended March 31

Years ended March 31

	2005	2006	2007	2008	2009		2005	2006	2007	2008	2009
Operating Income to Sales -	-	-	-	-	-	EPS	7.9	11.2	18.9	21.1	7.0
ROS -	1.99	3.16	4.81	5.12	2.15	CFPS	29.8	32.0	38.2	43.5	33.6

Net Sales per Employee

Years ended March 31

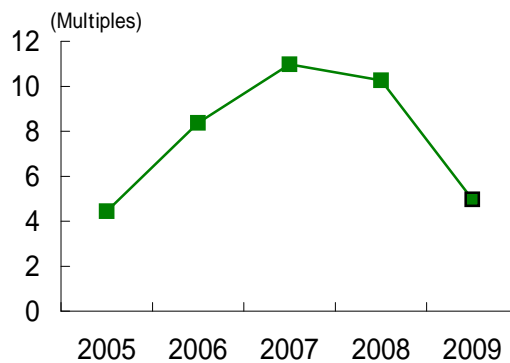


2005	2006	2007	2008	2009
43.29	45.73	49.25	49.11	41.49

Net Sales per Employee: Net Sales/Number of Employees.

Interest Coverage

Years ended March 31

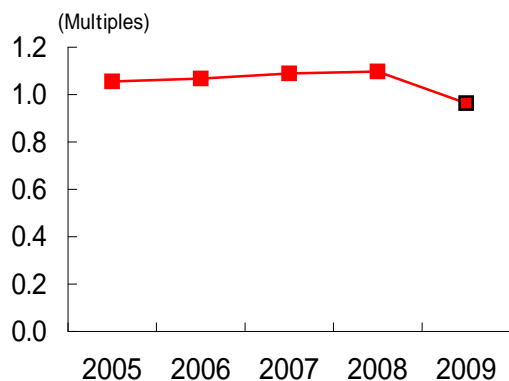


2005	2006	2007	2008	2009
4.44	8.37	10.97	10.27	4.97

Interest Coverage: (Operating Income + Interest and Dividend Income)/Interest Expense.

Asset Turnover

Years ended March 31

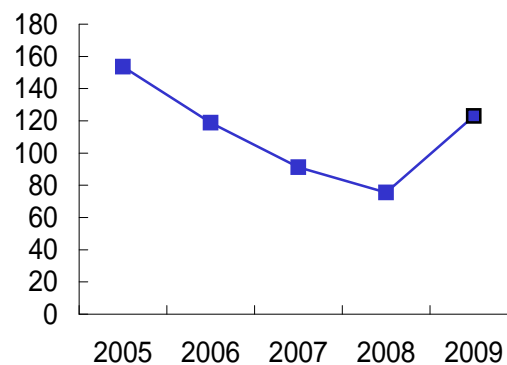


2005	2006	2007	2008	2009
1.06	1.07	1.09	1.10	0.96

Asset Turnover: Net Sales/Average Total Assets.

Debt to Equity Ratio

Years ended March 31



2005	2006	2007	2008	2009
154	119	91	76	123

Debt to Equity Ratio: (Interest Bearing Debt - Cash on Hand and in Banks) / Total Shareholders' Equity.

SEGMENT INFORMATION

Years ended March 31

(Billion ¥)

Years ended March 31

(Billion \)



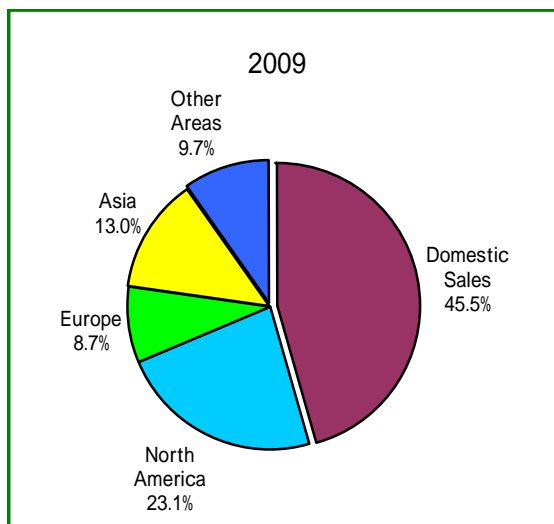
(Billion \)

	Orders Received			Order Backlog		
	2007	2008	2009	2007	2008	2009
Shipbuilding	135.6	251.3	71.5	314.0	414.2	356.9
Rolling Stock	269.1	183.3	264.6	434.4	431.4	478.6
Aerospace	255.6	202.5	239.2	286.7	248.3	286.6
Gas Turbines & Machinery	204.8	227.4	355.5	216.9	246.0	405.2
Energy & Environmental Engineering	150.2	106.0	83.6	172.3	135.3	112.2
Consumer Products & Machinery	403.7	434.0	336.5	0.0	0.0	0.0
Hydraulic Machinery	72.9	92.3	84.1	21.0	29.3	28.5
Other	100.7	113.9	105.5	19.9	29.2	31.2
Total	1,592.7	1,610.8	1,540.6	1,465.2	1,533.7	1,699.2

Note: The Hydraulic Machinery segment, which had been included in "Other" until the year 2007, is presented separately from the year 2008 as its materiality has increased. The information for the 2007 above had been retroactively restated based on the new industry segment categories.

OVERSEAS SALES

Years ended March 31



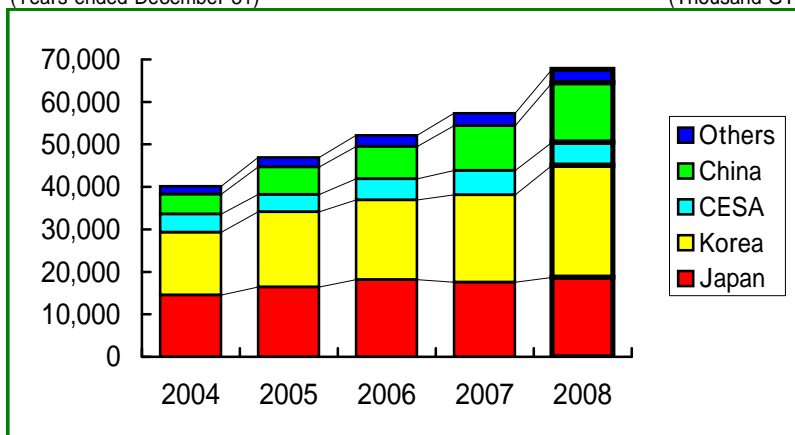
2009		
	Million \	% against net sales
North America	309,979	23.1%
Europe	116,298	8.7%
Asia	174,310	13.0%
Other Areas	130,051	9.7%
Total Overseas Sales	730,638	54.5%
Domestic Sales	607,959	45.5%
Net Sales	1,338,597	100.0%

Shipbuilding

Newly Constructed Ships World Market Volume

(Years ended December 31)

(Thousand GT)



	(Thousand GT)				
	2004	2005	2006	2007	2008
Japan	14,515	16,434	18,176	17,525	18,656
Korea	14,768	17,689	18,717	20,593	26,379
CESA a)	4,291	4,100	4,965	5,715	5,479
China	4,679	6,466	7,665	10,553	13,956
Others	1,918	2,280	2,595	2,934	3,220
World Market Volume	40,171	46,969	52,118	57,320	67,690

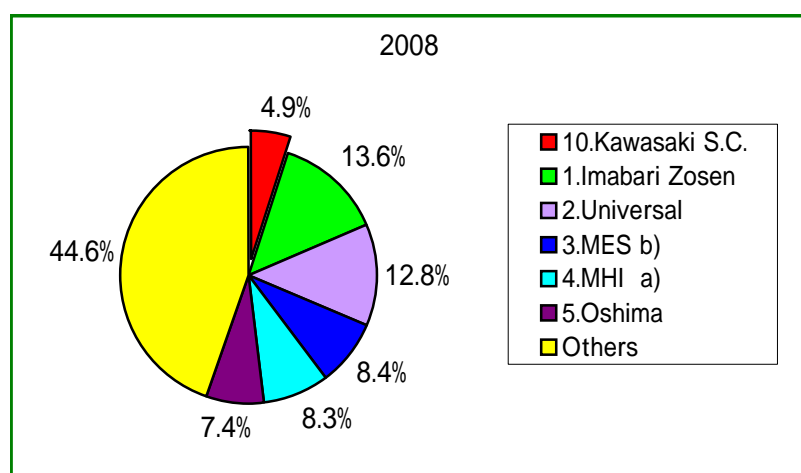
Notes: 1. Figures are on a ships volume completed (tonnage) basis for vessels of 100GT and above.

2. a) Community of European Shipyards' Associations

Source: Lloyd's Register "World Shipbuilding Statistics 2008"

Newly Constructed Ships Domestic Share

(Years ended December 31)



Notes: 1. Figures are on a ships volume completed (tonnage) basis.

2. a) Mitsubishi Heavy Industries.

b) Mitsui Engineering & Shipbuilding.

Source: The Shipbuilders' Association of Japan

2004 (%)	
1.Universal	15.3
2.Imabari Zosen	11.1
3.MHI a)	10.8
4.Tsuneishi	7.8
5.Koyo	7.2
12.Kawasaki S.C.	3.6

2005 (%)	
1.Imabari Zosen	14.5
2.Universal	13.6
3.MES b)	8.6
4.IHI Marine United	8.1
5.Tsuneishi	7.9
8.Kawasaki S.C.	5.6

2006 (%)	
1.Imabari Zosen	14.7
2.Universal	11.4
3.MES b)	9.3
4.MHI a)	9.2
5.Tsuneishi	8.8
8.Kawasaki S.C.	6.2

2007 (%)	
1.Imabari Zosen	14.9
2.Universal	13.2
3.Tsuneishi	8.8
4.MES b)	7.8
5.Oshima	7.4
12.Kawasaki S.C.	3.6

2008 (%)	
1.Imabari Zosen	13.6
2.Universal	12.8
3.MES b)	8.4
4.MHI a)	8.3
5.Oshima	7.4
10.Kawasaki S.C.	4.9

Aerospace

Japanese Aircraft Production by Demand Sector

(Years ended December 31)

(Billion ¥)

	2004	2005	2006	2007	(Million ¥) 2008
Japan Defense Agency	582,941	524,697	619,308	477,103	563,416
Other customers	360,041	423,356	574,178	664,827	622,913
Total	942,982	948,053	1,193,486	1,141,930	1,186,329

Source: The Society of Japanese Aerospace Companies

Helicopters Domestic Share for Civilian Use (The average of 2004-2008)

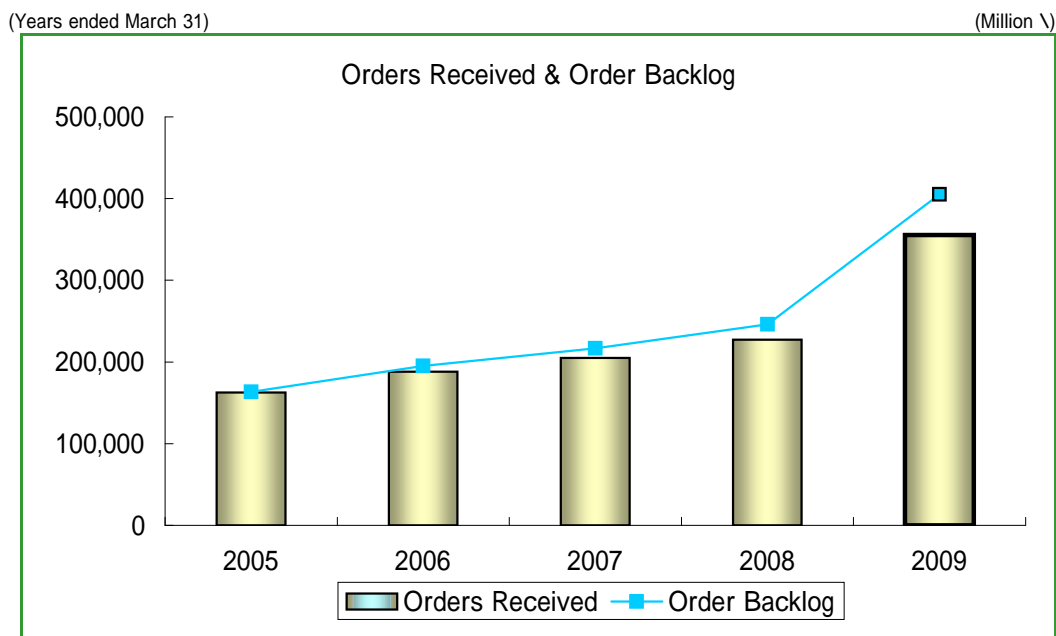
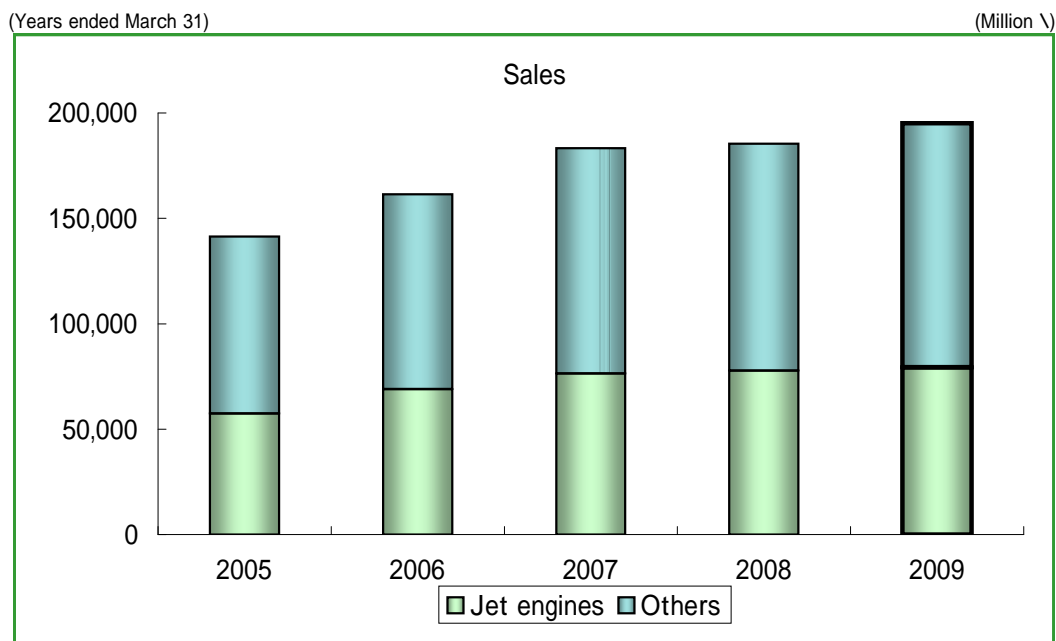
(Years ended December 31)

KHI	9%
Eurocopter (France/Germany)	42%
Bell (USA)	18%
Agusta (Italy)	26%
Others	5%

Gas Turbines & Machinery

Main Products: Jet engines, Gas turbine co-generation system, Gas turbines & Steam turbines for marines & land, Diesel engines, Marine propulsion system

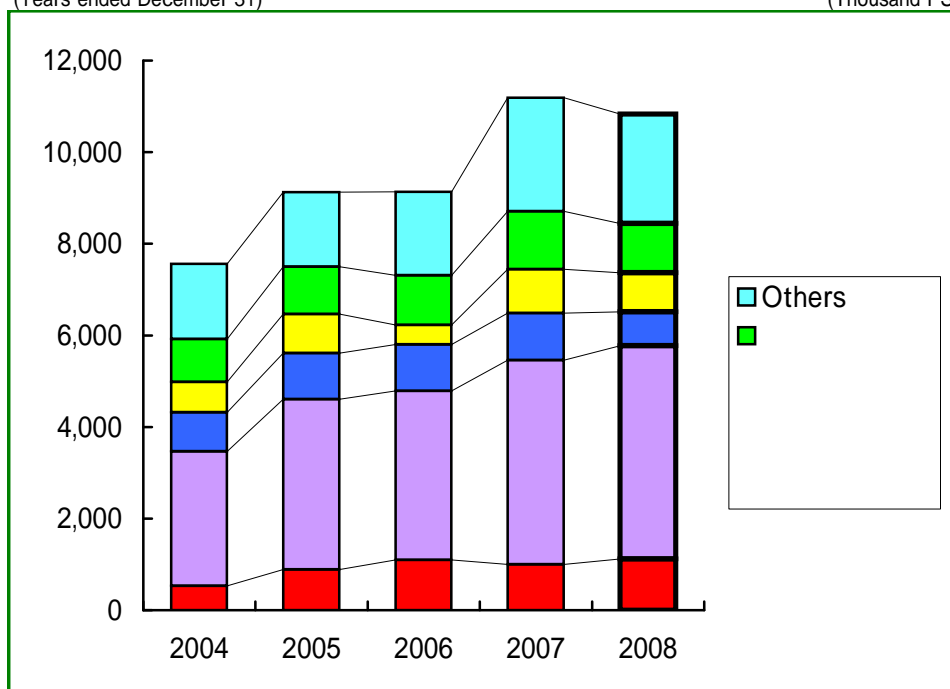
(Years ended March 31) - Consolidated Basis -	2005	2006	2007	2008	2009
Sales	141,366	161,431	183,309	185,486	195,156
Orders Received	162,700	188,068	204,847	227,422	355,517
Order Backlog	163,440	195,108	216,886	245,962	405,196



Diesel Engines Domestic Production

(Years ended December 31)

(Thousand PS)



(Thousand PS)

	2004	2005	2006	2007	2008
KHI	531	891	1,095	1,001	1,121
MES a)	2,938	3,712	3,693	4,459	4,650
MHI b)	848	1,010	1,012	1,027	742
Diesel United	665	851	428	954	852
Hitachi Zosen	941	1,034	1,085	1,264	1,079
Others	1,641	1,628	1,824	2,486	2,388
Total	7,564	9,126	9,137	11,191	10,832

Notes: 1. Figures are shown on the basis of horse power (PS).

2. a) Mitsui Engineering & Shipbuilding.

b) Mitsubishi Heavy Industries.

Source: KP Data.

Diesel Engines Domestic Share

(Years ended December 31)

	2004	2005	2006	2007	2008
KHI	7.0%	9.8%	12.0%	8.9%	10.3%
MES	38.8%	40.7%	40.4%	39.8%	42.9%
MHI	11.2%	11.1%	11.1%	9.2%	6.9%
Diesel United	8.8%	9.3%	4.7%	8.5%	7.9%
Hitachi Zosen	12.4%	11.3%	11.9%	11.3%	10.0%
Others	21.8%	17.8%	19.9%	22.3%	22.0%

Note: Figures are shown on the basis of horse power (PS).

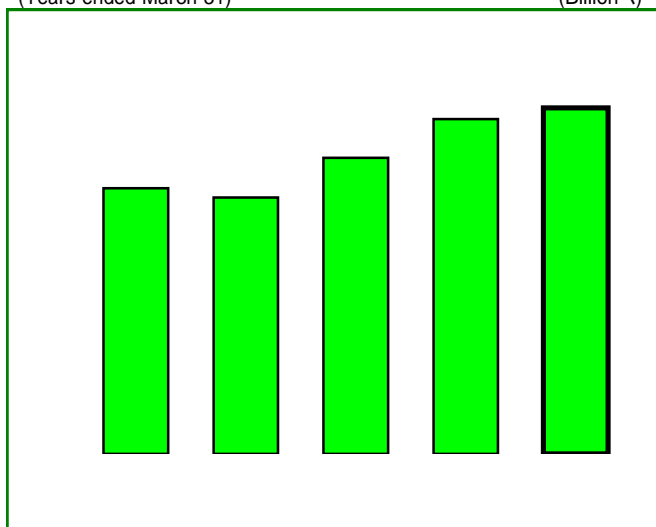
Source: KP Data.

Gas Turbine Generator Sales

-Parent Only-

(Years ended March 31)

(Billion ¥)



Gas Turbine Generators Domestic Share

(Years ended March 31)

	2005	2006	2007	2008	2009
KHI	65.6%	63.1%	56.8%	62.9%	60.6%
Yanmar Diesel	13.2%	18.3%	19.1%	22.3%	21.4%
Niigata Engineering	15.6%	13.4%	20.1%	13.6%	17.7%
Daihatsu Diesel	3.3%	2.3%	1.5%	1.2%	0.3%
MHI a)	2.3%	0.4%	0.0%	0.0%	0.0%
Others	0.0%	2.5%	2.5%	0.0%	0.0%
Total	100.0%	100.0%	100.0%	100.0%	100.0%

Notes: 1. Figures represent sales for medium- and small-sized gas turbine generators (up to 2,000kW).

2. a) Mitsubishi Heavy Industries.

Source: *Denki Nichinichi Shimbun*, "Ranking Series".

Energy & Environmental Engineering

Main Products : Industrial plants (cement, chemical and others), Power plants, LNG & LPG tanks, Municipal refuse incineration plants, Shield machines

(Years ended March 31)-Consolidated Basis-

(Million \)

	2005	2006	2007	2008	2009
Sales	191,012	164,506	122,062	142,547	105,178
Orders Received	126,403	97,332	150,221	106,046	83,649
Order Backlog	210,160	144,147	172,255	135,288	112,163

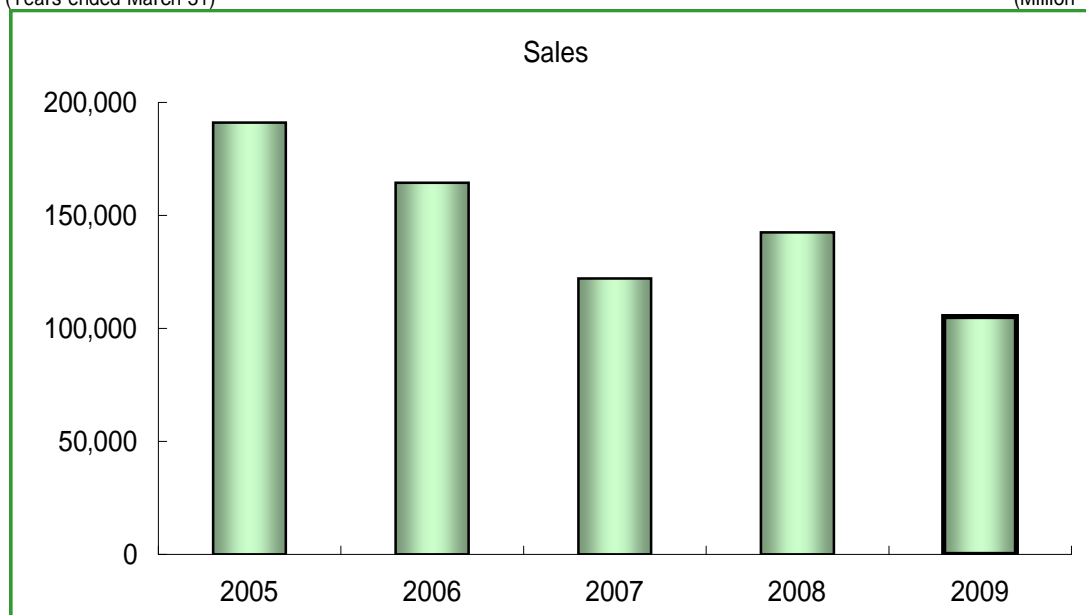
Note: Environmental engineering business unit in the Energy & Environmental Engineering segment of "Kawasaki Heavy Industries, Ltd.

(KHI)" was separated from KHI in Oct. 2006, as a wholly owned subsidiary, i.e., "Kawasaki Environmental Engineering, Ltd.(KEE)".

The merger of KEE and Kawasaki Plant Systems, Ltd.(K Plant) in Apr. 2007 created the new K Plant, which is now the segment's core company.

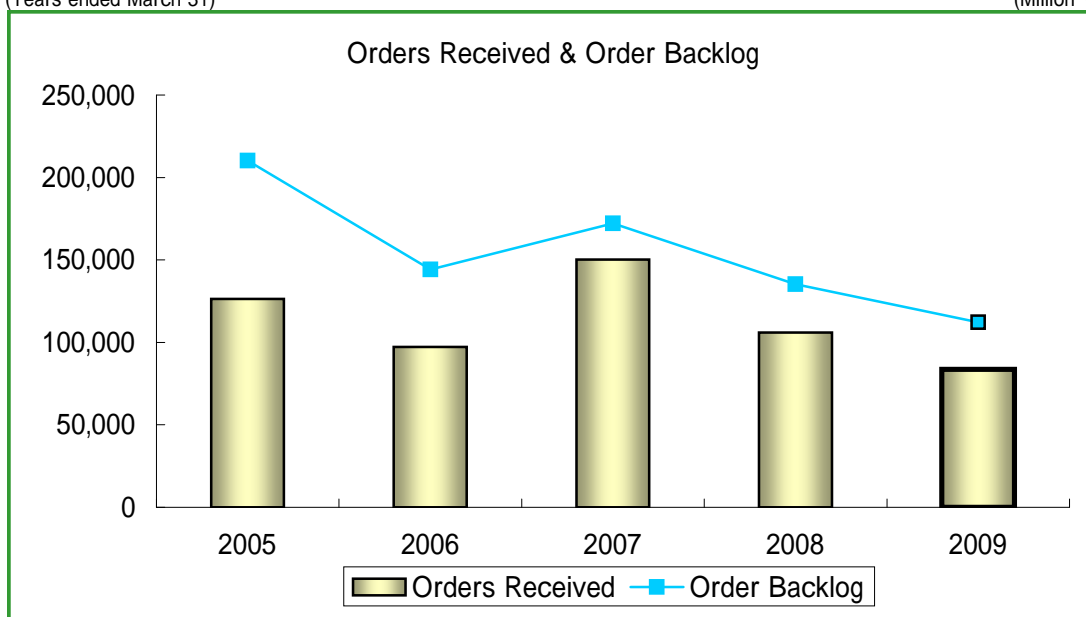
(Years ended March 31)

(Million \)



(Years ended March 31)

(Million \)



Refuse Incineration Plants Domestic Market Volume

(Years ended March 31)

(Tonnes per day)

	2005	2006	2007	(Tonnes per day)	
				2008	2009
KHI	540	0	0	0	0
Hitachi Zosen	815	128	0	260	36
JFE a)	333	250	358	330	297
MHI b)	0	62	0	0	0
Takuma	150	480	0	258	560
IHI c)	0	0	0	0	0
Ebara	180	511	309	450	0
Nippon Steel	530	132	1,352	635	165
Kubota	0	58	0	0	0
Others	776	755	1,106	244	1,182
Total Market Volume	3,324	2,376	3,125	2,177	2,240

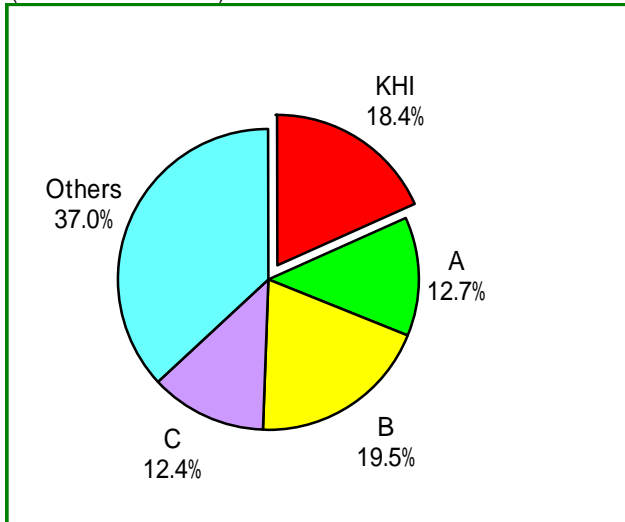
Notes: 1. Figures represent tonnes of processing capacity per day for ordered units.

2. a) JFE Engineering Corporation. (Until 2003, "NKK")

b) Mitsubishi Heavy Industries.

**Shield Machines and Tunnel Boring Machines
- Large-Diameter Model
Domestic Share (2005-2009 Total)**

(Years ended March 31)



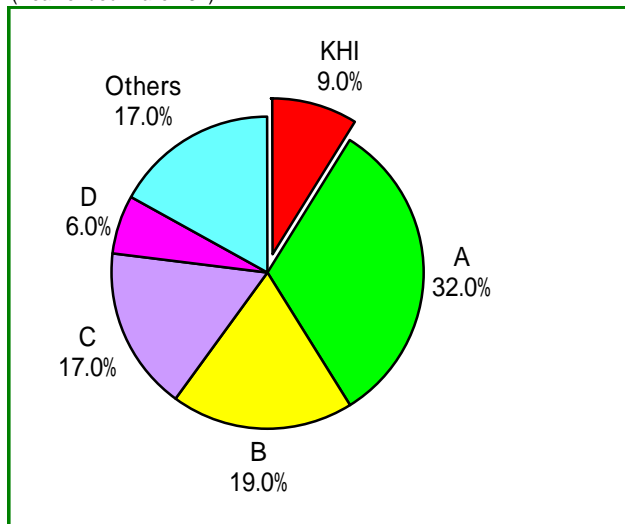
Notes: 1. Segments A, B and C represent the shares of the three other major companies in this market.

2. Figures are shown on a sales amount basis.

Source: Company's estimates.

**Shield Machines and Tunnel Boring Machines
Domestic Share (2009)**

(Year ended March 31)



Notes: 1. Segments A, B, C and D represent the shares of the four other major companies in this market.

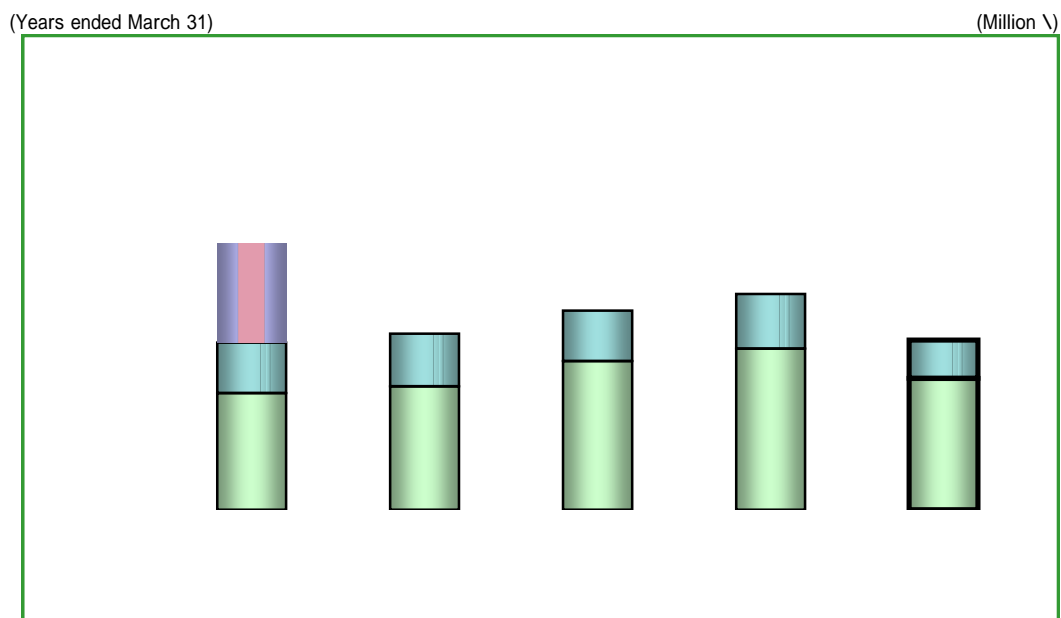
2. Figures are shown on a sales amount basis.

Source: Company's estimates.

Consumer Products & Machinery

Main Products : Motorcycles, All-Terrain Vehicles(ATVs), Utility Vehicles, Personal Watercraft, General-Purpose Gasoline Engines, Industrial Robots

(Years ended March 31)-Consolidated Basis-					(Million \)
	2005	2006	2007	2008	2009
Sales	338,450	366,960	403,702	433,963	336,459



Industrial Robot Sales

(Years ended March 31)-Parent Only-					(Million \)
	2005	2006	2007	2008	2009
Sales	26,729	35,232	43,936	39,098	28,533

(Years ended March 31)

(Million \)

Composites of Consumer Product Sales

-Parent Only-

(Years ended March 31)

2005 2006 2007 2008 2009

Motorcycle Sale

Hydraulic Machinery

CONDENSED BALANCE SHEETS

2001年3月31日現在 連結財務諸表 貸借対当表

Kawasaki Heavy Industries, Ltd. and consolidated subsidiaries
As of March 31

ASSETS

2009

2009年3月31日現在 連結財務諸表 貸借対当表

CONDENSED STATEMENTS OF INCOME

Kawasaki Heavy Industries, Ltd. and consolidated subsidiaries
Years ended March 31

	2009	2008	2007	2006	2005	2004
Net sales	\1,338,597	\1,501,097	\1,438,619	\1,322,487	\1,241,592	\1,160,252
Cost of sales	1,146,944	1,262,032	1,213,524	1,148,547	1,088,219	998,416
Gross profit	191,653	239,065	225,095	173,940	153,373	161,836
Selling, general and administrative expenses	162,940	162,155	155,953	132,145	128,629	139,586
Operating income	28,713	76,910	69,142	41,795	24,744	22,250
Other income (expenses):						
Interest and dividend income	4,352	5,005	3,807	3,225	3,240	3,476
Equity in income (loss) of unconsolidated subsidiaries and affiliates	8,709					

Paid-in Capital

\

Paid-in Capital

KAWASAKI HEAVY INDUSTRIES, LTD.